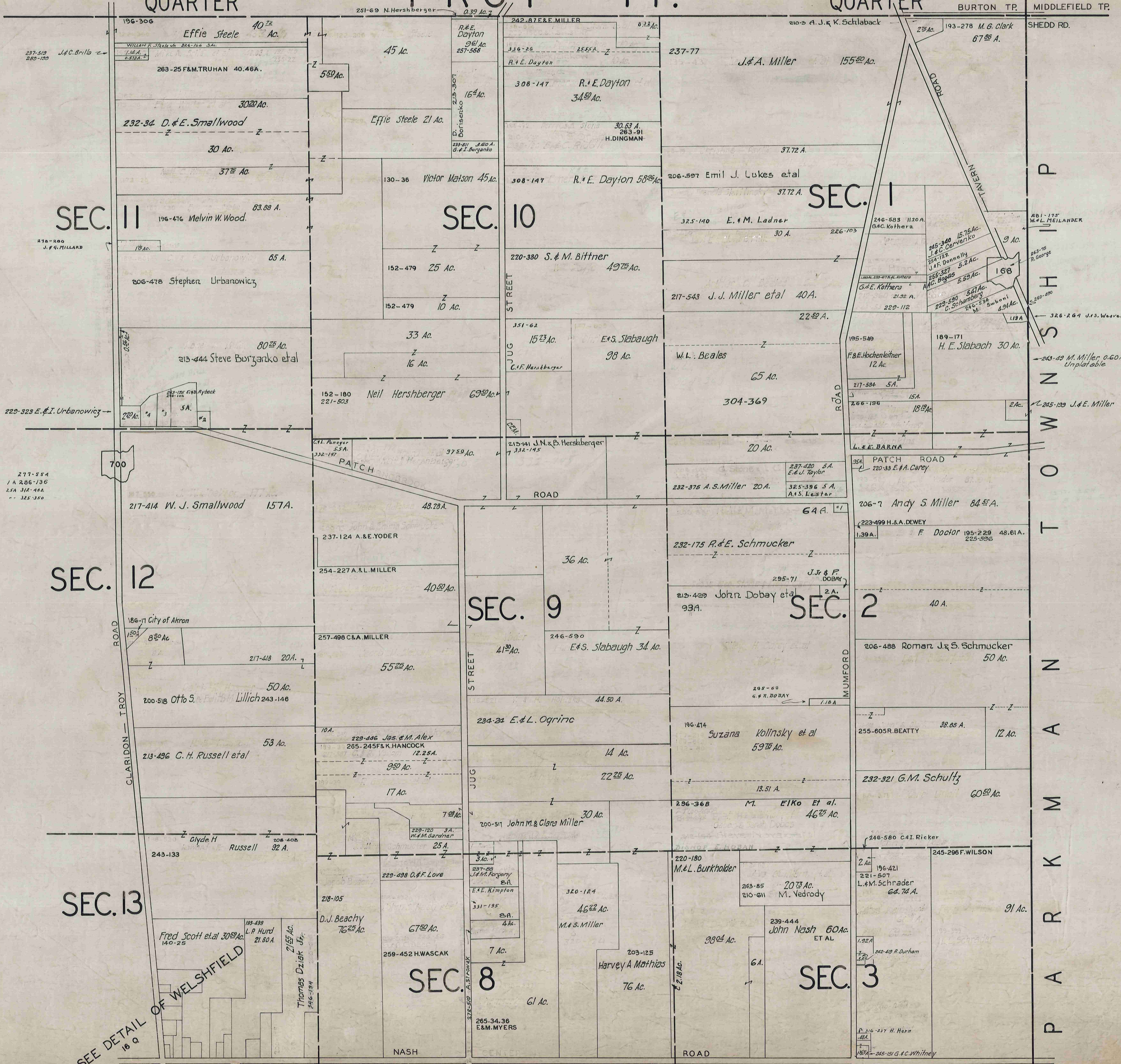


NORTH-EAST QUARTER

TROY TP.

NORTH-EAST QUARTER

BURTON TP. MIDDLEFIELD TP.



- 1 E.A. CAREY 277-554
- 2 N.F. BURZANKO 1A 286-136
- 3 W.H.M. HATCH 25A 312-422
- 4 R.M. HUFFMAN 325-350

SEE DETAIL OF WELSHFIELD 16 Q

SCALE 1 in. = 10 CH.
 JULY 1959
 JAN 1, 1959

NEWBURY TP.

BURTON TP.

NORTH-WEST QUARTER

TROY TP.

NORTH-WEST QUARTER

S N I P
N S H I P
T O W
T O W
N
A U B U R N

- #11 272-628 J.M. TAKER 2A
- #10 332-55 J.A. TAKSKEER 2A
- #9 272-628 J.M. TAKER 2A
- #8 259-330 J.H. Dolezal 2A
- #7 257-455 M.A.S. Kaltronick 2A
- #6 308-340 J.R. LaFlam 2A
- #5 316-43 E. Peck 2A
- #4 272-626 J.M. TAKER 2A
- #3
- #21 247-487 E.E. Blackburn 3A
- #22 247-486 G.A. Ely 378A
- #23 325-204 J.A. Pulai 2.0 A.

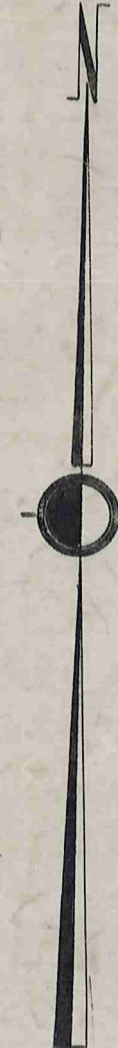
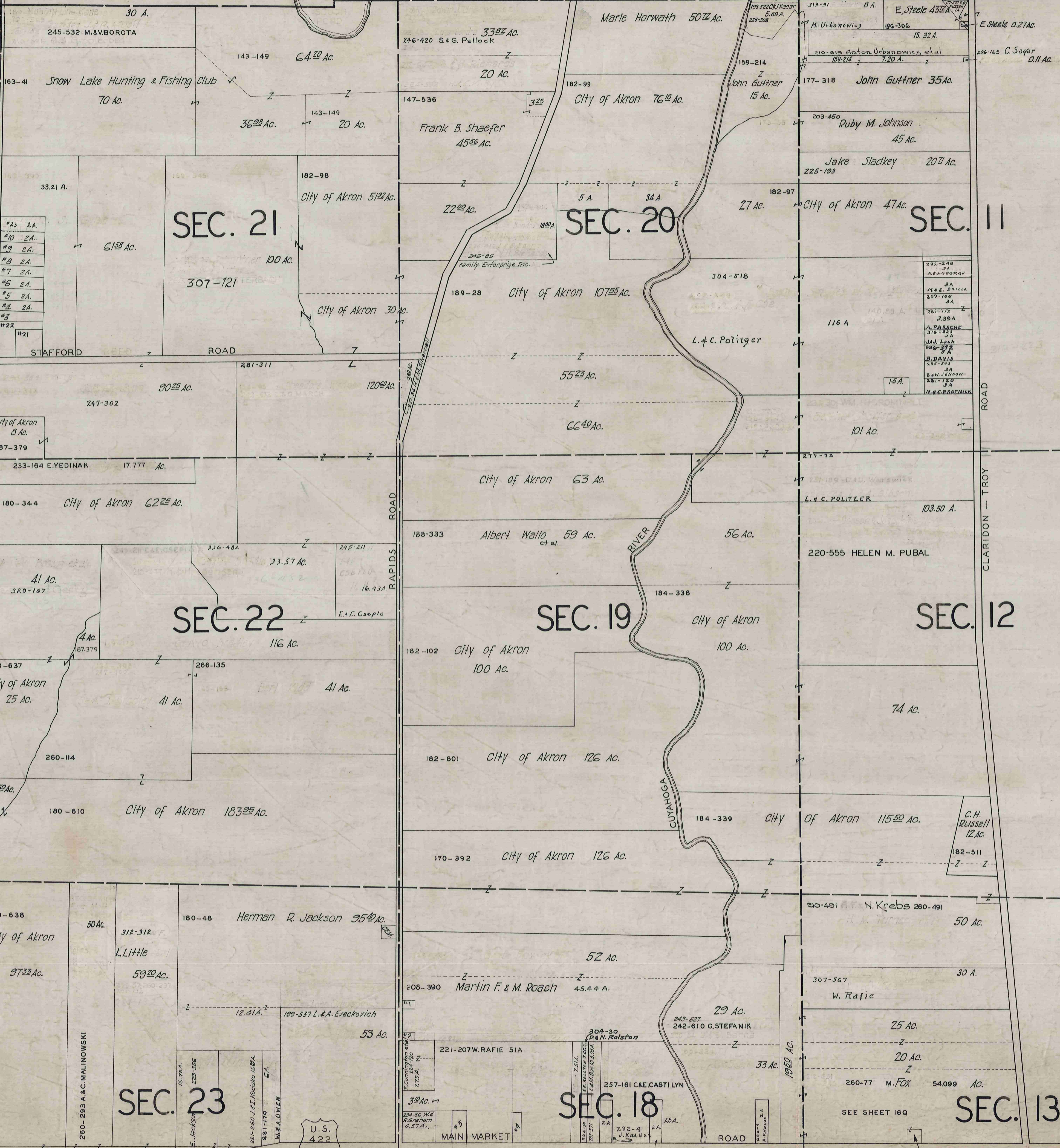
SNOW ROAD

STAFFORD ROAD

RAPIDS ROAD

CUYAHOGA RIVER

CLARIDON - TROY ROAD

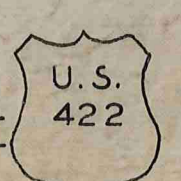


SCALE 1 in. = 10 ch.

JAN. 1, 1959

- #1 251-417 M.A. Roach 0.45 A.
- #2 251-416 L.B. Roach 0.45 A.
- #3 265-208 J.H. Kangas
- #4 304-291 A.G. Felner 1.00 A.
- #5 325-513 J. Portman 1.70 A.

MATCH LINE SOUTH-WEST QUARTER



16 N.W.

U.S. 422

TROY T.P.

SEE DETAIL OF WELSHFIELD

SEC. 13

SEC. 8

SEC. 3

SEC. 14

SEC. 7

SEC. 4

SEC. 15

SEC. 6

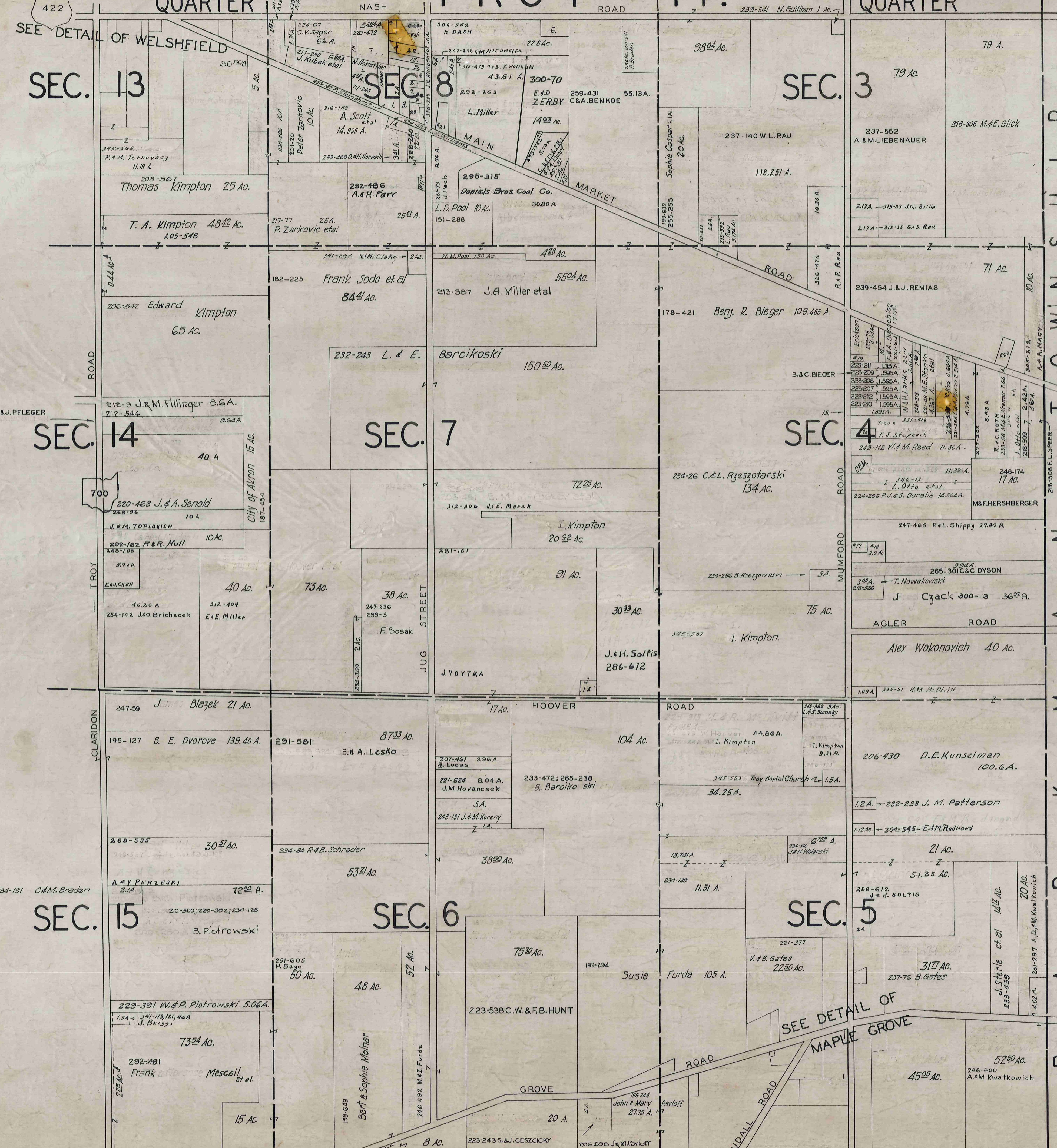
SEC. 5

- Sec. 8
- 1. 217-630; 243-245 H. Hatcher 2 Ac.
 - 2. 206-364 J. DURSCHLAG 2.54 Ac.
 - 3. 234-617 H. & R. Lucas 2 Ac.
 - 4. 319-358 S. P. Kowaluk 0.67 Ac.
 - 5. 316-332 N. E. Lipstreu 1.0 Ac.
 - 6. 245-421 E. E. Miller 2.0 Ac.
 - 7. 203-111 K. A. BURKHARDT 0.54 Ac.
 - 8. 255-52 D. H. Jefferson 0.54 Ac.
 - 9. 260-71 A. L. Rive et al 0.64 Ac.
 - 10. 278-149 W. R. FIE 0.64 Ac.
 - 11. 292-486 A. & H. Farr 0.608 Ac.
 - 12. 263-169 W. Becker 1.0 Ac.
 - 13. 263-60 H. Krause 1.003 Ac.
 - 14. 260-430 A. J. Erickson 1.0 Ac.
 - 15. 265-376 G. Bruening 0.71 Ac.
 - 17. 260-32 W. Lossner 0.71 Ac.
 - 18. 247-486 K. A. Ceoura 1.0 Ac.
 - 19. 266-429 J. L. Tideman 0.56 Ac.
 - 20. 264-523 J. C. REIFIS 1.20 Ac.
 - 21. 311-494 H. BREITRAGER 1.39 Ac.
 - 22. 312-761 C. W. Lantz 2.18 Ac.
 - 23. 286-310 I. KUCIENKO 0.2 Ac.
 - 24. 309-281 W. H. GAWRONSKI 2.15 Ac.
 - 25. 312-500 J. F. Michaels 3.16 Ac.
 - 26. 235-270 K. M. Brueening 1.0 Ac.

T O W N S H I P T R O Y A N T A R K A P

SCALE 1 in. = 10 CH.
JULY 1, 1939
JAN 1, 1959

16 S.E.



SOUTH-WEST QUARTER

TROY TWP.

SOUTH-WEST QUARTER

NORTH-WEST QUARTER
MATCH LINE

MARKET ROAD

ROAD

ROAD

U.S. 422

U.S. 422

P
O
R
T
A
G
E

S
H
A
W

A
U
B
U
R
N

SEC. 23

205-541 169-14
F. R. Chapman 87 Ac. Arthur H. Bond et al 104¹⁰ Ac.

128-171 265-274 D & R. Shaw 70 Ac.

232-438 A. & J. Turcoy 53⁸⁰ Ac.

239-24 L. & R. HILBRANT 52 Ac.

196-584 Stuart B. Hull 215¹⁶ Ac.

154-412 Arnold Imhoff 57 Ac.

253-191, 192 R. Smith 22.35 A.

251-525 40.65 A R. R. Stickle 226-193 C & B. Zeniset 19.74 A John Griger

237-473 F. & M. WEBER 75.41 A.

SEC. 24

255-277 L. & M. Aidenour 68²² Ac.

239-562 S. & E. SEXSMITH 19.27 A

251-525 40.65 A R. R. Stickle 226-193 C & B. Zeniset 19.74 A John Griger

237-473 F. & M. WEBER 75.41 A.

SEC. 25

149 Ac. City of Akron 22⁵⁰ Ac.

122-584 Arlie E. Taylor 45 Ac.

251-148 R. R. Stickle 96 Ac.

35⁸⁰ Ac.

184-575 Frank E. Taylor 100 Ac.

251-148 R. R. Stickle 96 Ac.

149 Ac. City of Akron 22⁵⁰ Ac.

122-584 Arlie E. Taylor 45 Ac.

SEC. 18

192-114 Geauga County Commissioners 121.75 A.
266-267 G. & S. STEFNIK

188-156 A. J. Soika et al 42²⁵ Ac.

272-592 48.86 A. E. Brigham

184-567 City of Akron 33²⁰ Ac.

187-187 City of Akron 123¹⁰ Ac.

169-418 City of Akron 123¹⁰ Ac.

167-265 City of Akron 37¹⁷ Ac.

179-465 City of Akron 41²⁵ Ac.

33⁰⁸ Ac. City of Akron 24 Ac.

229-221 G. Whitney 16 Ac.

182-176 City of Akron 82 Ac.

200-2 Stuart B. Hull 103 Ac.

159-329 John Koscelnik et al 50 Ac.

182-97 City of Akron 45¹⁰ Ac.

156-76 City of Akron 147³⁷ Ac.

232-155 J. & E. Koscelnik 30 Ac.

220-603 JOHN & ELIZABETH KOSCELNIK 50 Ac.

225-494 W. M. Koscelnik 10 Ac.

218-413 MARY V. SMAYDA 72⁵⁰ Ac.

187-266 City of Akron 48⁵⁰ Ac.

208-282 Arria Tiegiser 76⁵⁰ Ac.

233-113 P. & E. SANBORN 65.52 A

300-420 37.63 A H. & H. SANBORN

282-211 213 D. THRASHER et al 20⁰⁰ Ac.

303-315 F. & K. COLSON 20⁰⁰ Ac.

304-109 T. F. Kalman 20⁰⁰ Ac.

SEC. 13

Alice F. Coe 143²⁵ Ac.

Clyde H. Russell 17²⁵ Ac. 169-378

200-316 Josephine K. Dillon 2.59 Ac.

203-151 Alice F. Coe 20.32 A 10.07 A

268-375 2.59 Ac.

268-375 8 A.

187-297 City of Akron 22 Ac.

189-88 8 Ac.

187-549 A. COE T. A. Kimpton 4 A.

10 Ac. B. E. Kimpton 206-542

187-454 City of Akron 67⁵⁰ Ac.

SEC. 14

304-247 5 A Gilliland 229-133

246-578 C. Kauffman 24.51 A.

237-571 F. Boyk 2 A.

226-471 J. S. & F. Boyk 38 A.

242-491 F. & M. EMRICH 52.98 A.

195-127 B. E. Dvorove 139.40 A.

224-202 L. Vrzak ETAL 23.09 A. 260-295 38²⁴ A.

213-624 Chas. Kralik 50 A.

242-321 H. I. ZACHARIAS 17⁵⁰ A.

212-241 Ray E. Cook 50 A.

Neilie Sharky Winagle 50 A.

292-461 20¹⁵ Ac. Frank Mescall Et al

- # 1 296-589 H. & A. WEST
- # 2 299-363 H. & E. BARRINGER
- # 3 304-628 E. A. FORTKOWSKI 1.21 Ac.
- # 4 319-23 R. H. Angus
- # 5 336-624 A. Proskowski et al 1.21 Ac.
- # 6 346-21 C. B. Scarl 1.38 Ac.

SCALE 1 in. = 10 ch.

JULY, 1929

JAN. 1, 1931

JAN. 1, 1959

